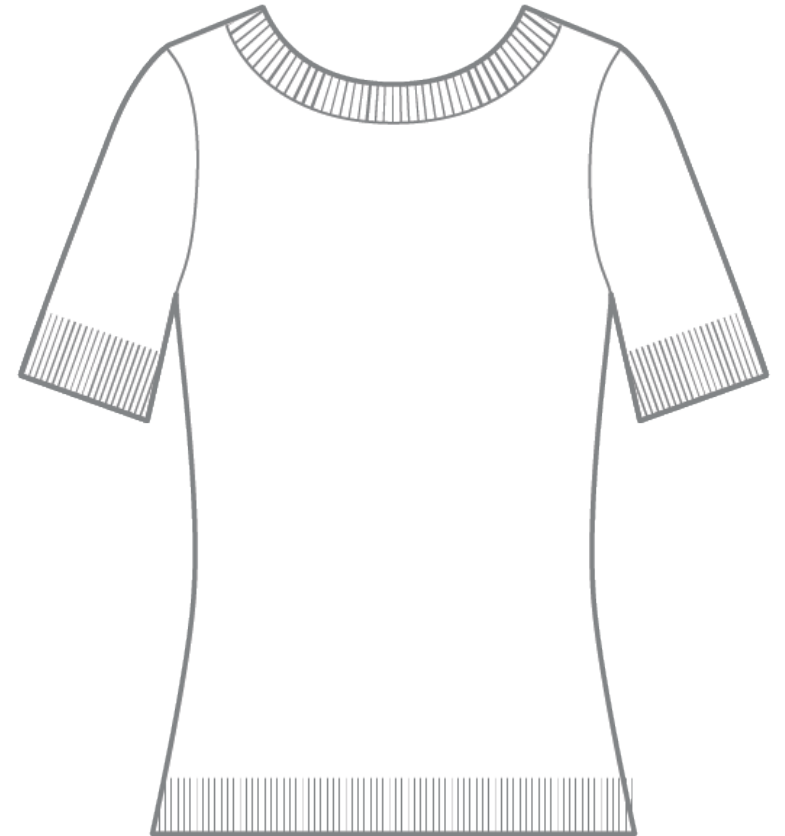


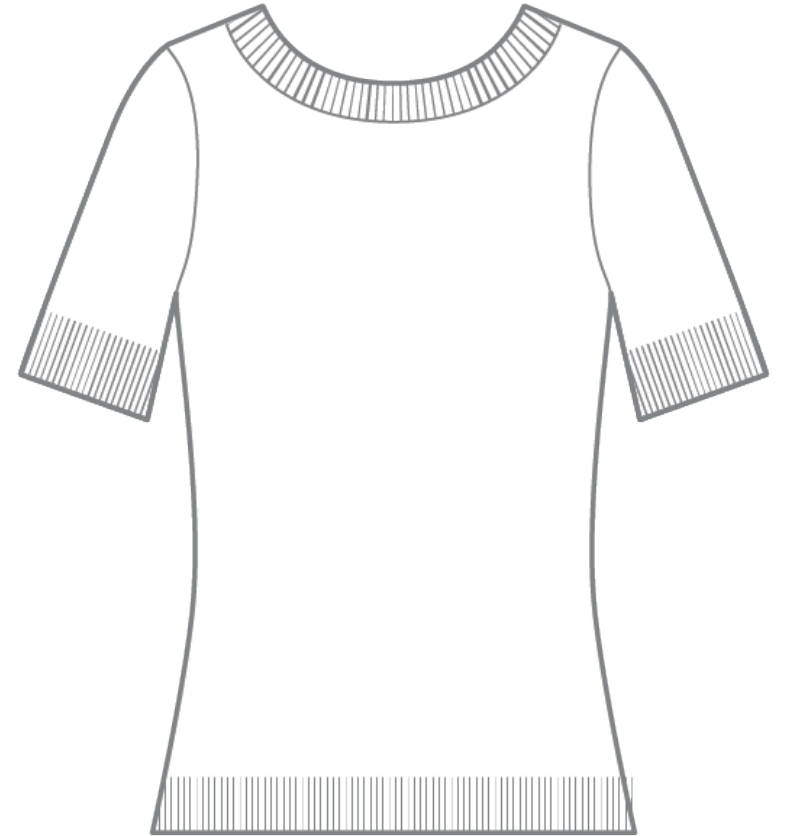
Why Set-In Sleeve?

- Flexible design
- Can use any neck shape
- Seams give structure and longevity
- Clean, tailored look



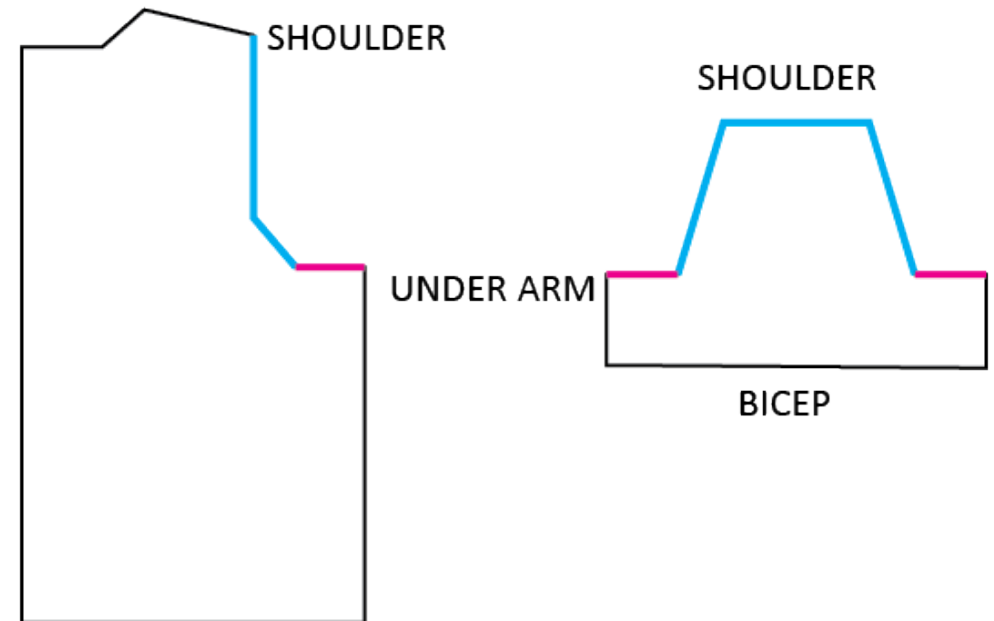
In-Pieces or Together?

- Can be worked seamless, AKA contiguous
- More difficult to write
- More difficult to fit
- Less structure



Sleeve Cap + Armhole

- How does Sleeve Cap and Armhole relate?
- Standard look: armhole and sleeve cap same length
- Alter proportions for new look



Fit Difficulties

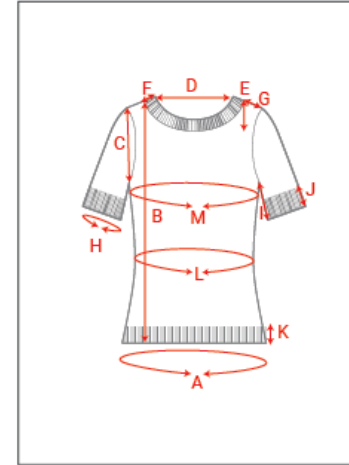
- Flexible and adaptable
- Particularly when worked in pieces



Set-In Sleeve: Design Considerations

- Armhole ends 2 inches/5 cm or less from bottom of armhole

Design Name: Erica



GARMENT PLANNING WORKSHEET

Swatch: stockinette



Notes:

BODY:
TUBULAR CAST ON
1X1 RIB TRIM HEM
WAIST SHAPING
CLOSE FIT THROUGHOUT BODY
FULL LENGTH

NECK:
1X1 RIB, ATTACHED
ITALIAN BIND OFF

SLEEVES:
SET IN SLEEVE
1X1 RIB TRIM, GROWN ON

Yarn: THE WANDERING FLOCK SINGLES Stitches: 18

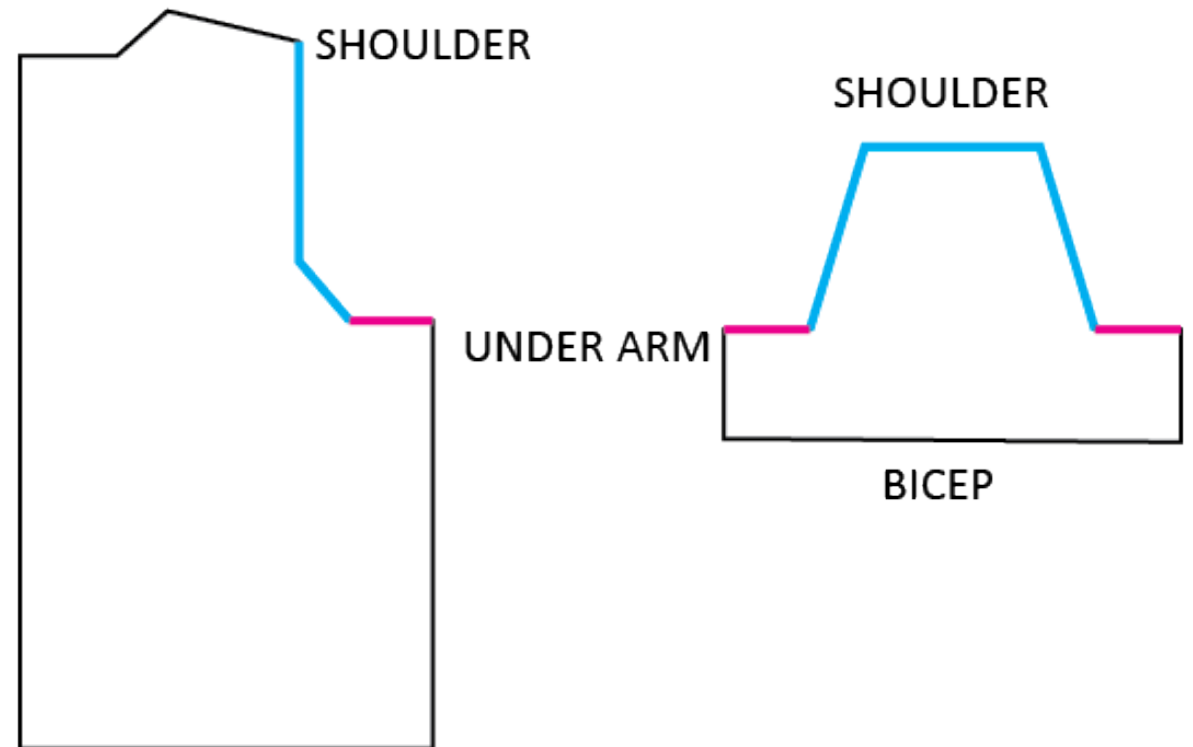
Needle size: US 6 / 4 mm Rows: 28

Dimensions: 4" / 10 cm square

	Garment	Ease +/-
A. Body circ	36"	+0"
B. Body length	23"	
C. Armhole depth	6.25"	+0"
D. Neck width	9"	
E. Neck depth	4"	
F. Neck trim height	2.5"	
G. Shoulder width	2"	+0"
H. Bicep circ	12.5"	+0"
I. Sleeve length	4"	
J. Cuff height	2.5"	
K. Hem height	2.5"	
L. Waist circ	31"	
M. Chest circ	36"	+0"

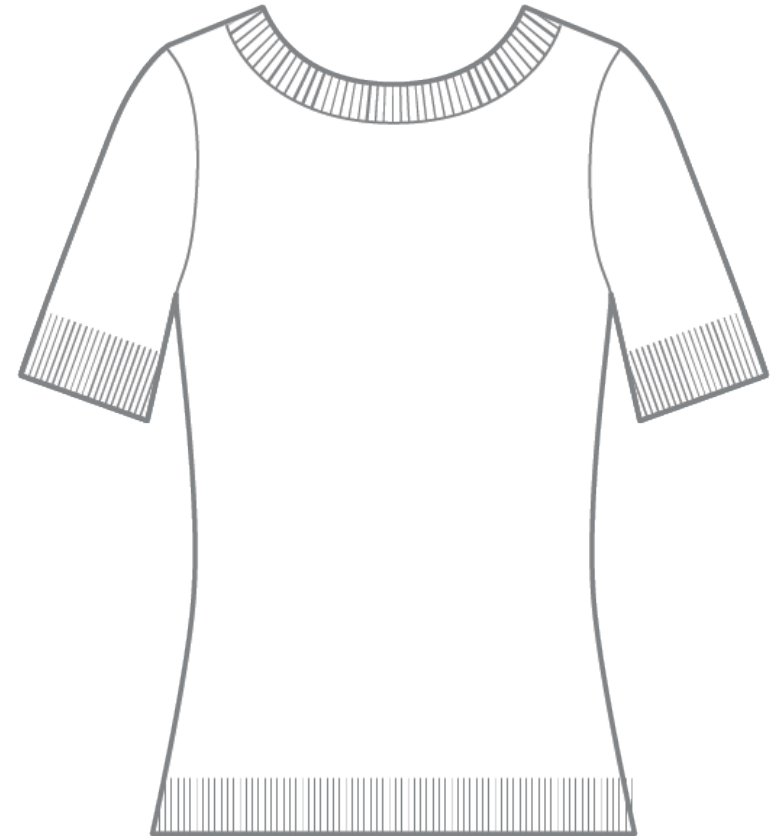
Set-In Sleeve: Design Considerations

- Sleeve cap = armhole circumference
- Bicep circumference matches body



Seams or Seamless?

- Seams = stability and flexibility
- Harder for maker to adjust seamless
- More difficult to write seamless pattern



Set-In Sleeve: Getting Creative

