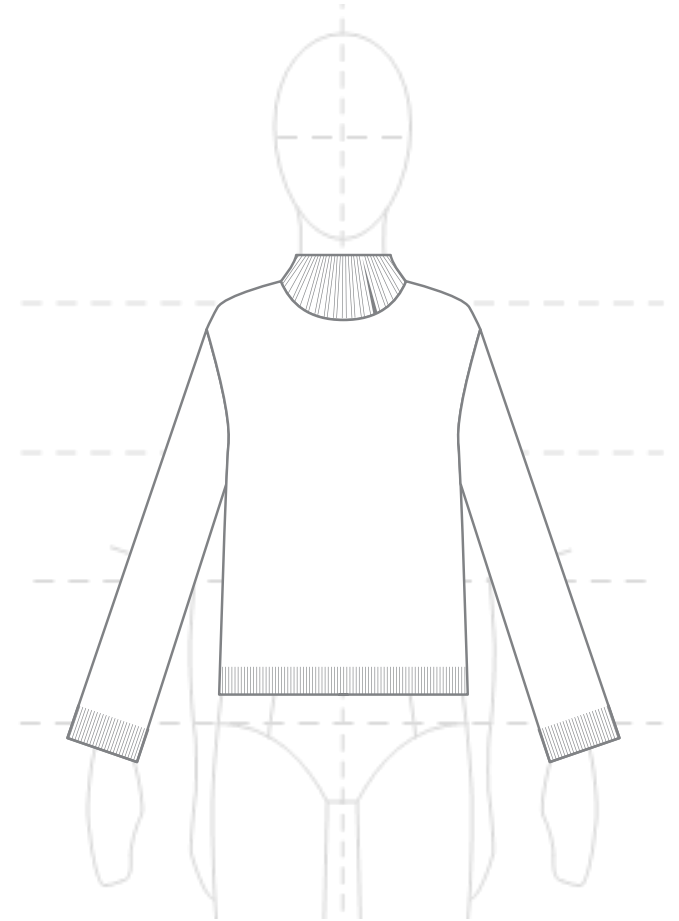
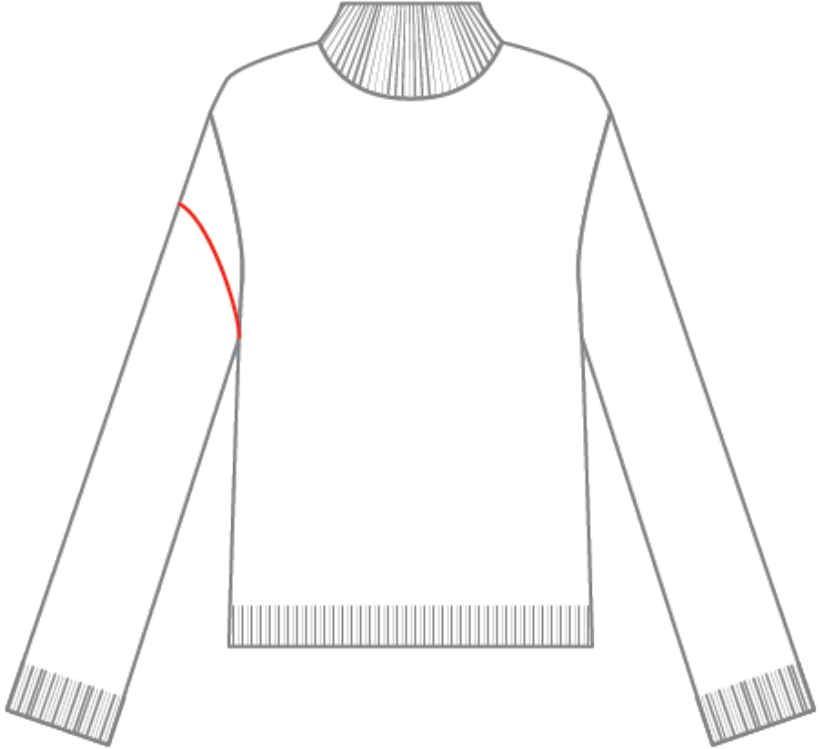
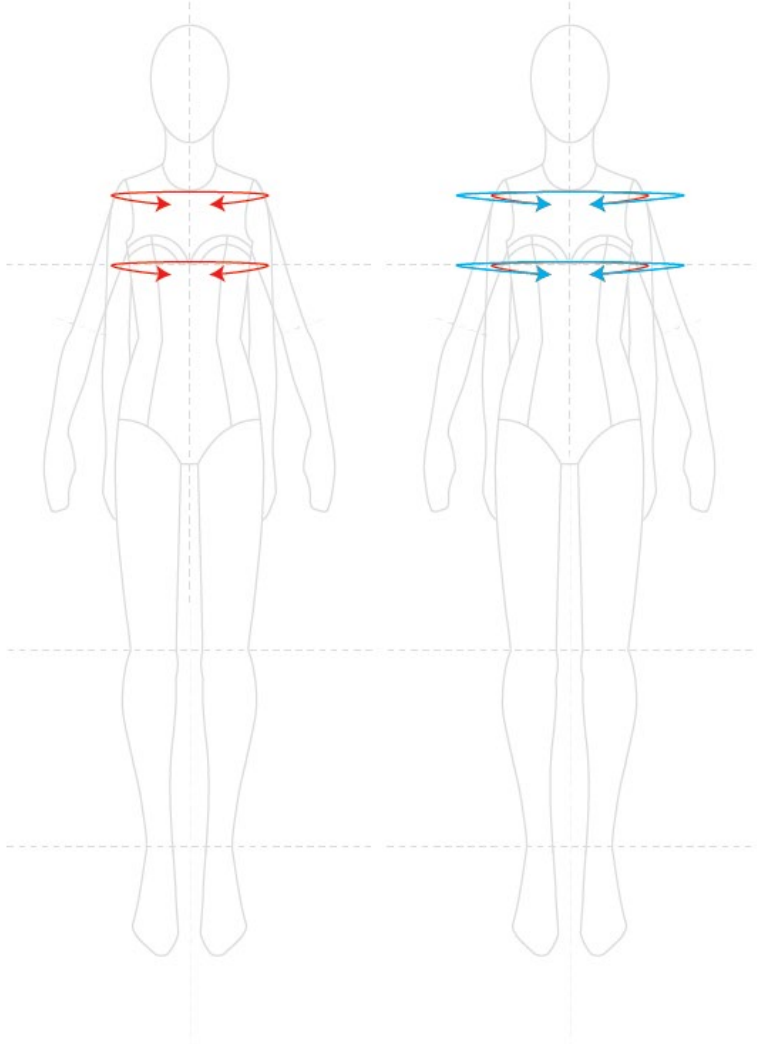


Why Drop Shoulder?

- Sweater extends beyond natural shoulder
- Slouchy, oversized look
- Flexible canvas for designing



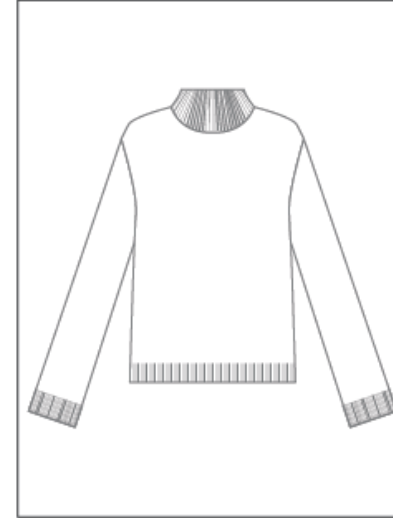
Drop Shoulder: Fit Difficulties



Why Drop Shoulder?

- Shoulder extension
- Body circumference
- Armhole drop
- Bicep and wrist circumferences

Design Name: Ansel



GARMENT PLANNING WORKSHEET

Swatch: stockinette



Notes:

BODY:
STRIPE LAYOUT A
DROP SHOULDER
FULL LENGTH
1X1 RIB HEM
CONTRAST COLOR HEM
ITALIAN CAST ON

NECK:
CONTRAST COLOR
MOCK NECK
1X1 RIB
ITALIAN BIND OFF

SLEEVES:
STRIPE LAYOUT B AND C
FULL LENGTH
1X1 RIB CUFF
CONTRAST COLOR CUFF
ITALIAN BIND OFF

Yarn: GREENE COUNTY WOOL Stitches: 18

Needle size: US 6 / 4 mm Rows: 28

Dimensions: 4" / 10 cm square

	Garment	Ease +/-
A. Body circ	45"	+5"
B. Body length	24"	
C. Armhole depth	9"	+2"
D. Neck width	10"	
E. Neck height	3"	
F. Neck circ	14.5"	+0"
G. Sleeve drop	2"	+2"
H. Bicep circ	18"	+5"
I. Sleeve length	20"	
J. Cuff height	3"	
K. Hem height	3"	
L. Cuff circ	12"	

Drop Shoulder: Design Considerations

- Loose fit body + slim fit sleeve
- Loose fit body + loose fit sleeve
- Where do body and sleeve meet?
- Seams or seamless?